

## WARNING

The 4-pin male connector on the cable connects to the female connector on the Heated SW Circuit. This connection **MUST** be aligned correctly to avoid damage to the Darvall Warm Inspired Air Control Unit.

**If connected improperly, the computerized control board in the Darvall Warm Inspired Air Control Unit may be damaged and its warranty will be void.**



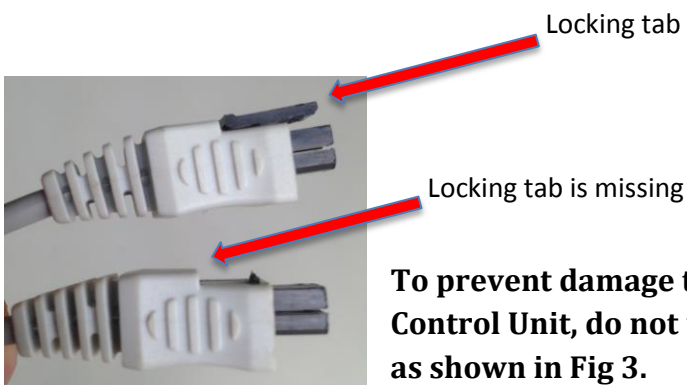
Align the **ARROW** on the 4-pin male connector with the locking tab facing up, as shown in Fig 1.

**Fig 1**



Gently push the 4-pin male connector on the cable into the female connector on the Heated SW Circuit until the locking tab “clicks” into place, as shown in Fig 2.

**Fig 2**



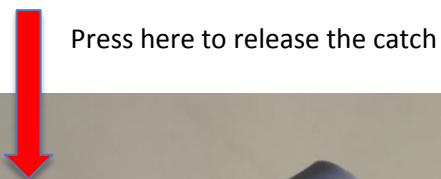
To prevent damage to the Darvall Warm Inspired Air Control Unit, do not use cable if the locking tab is missing as shown in Fig 3.

**Fig 3**

## To Remove Connector Cable from the Heated SW Circuit

To remove the 4-pin male connector from the Heated SW Circuit place gentle pressure at the rear of the locking tab to release the catch and then pull gently.

See Fig 4 and Fig 5



**Fig 4**



**Press firmly on the rear of the locking tab and pull the 4-pin male connector gently from the Heated SW Circuit.**

**Fig 5**